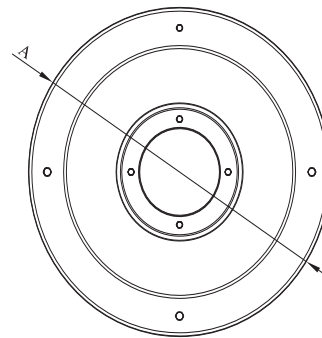
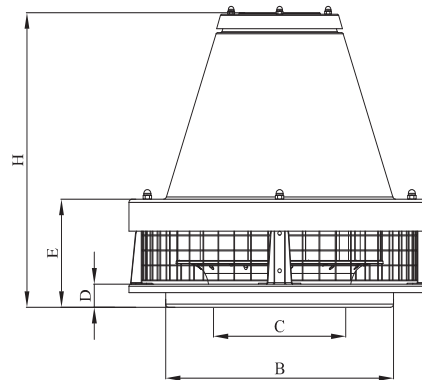


# High-temperature roof exhaust fans

## DV-ROF-RHT



### Dimensions



### Description

The DV-ROF-RHT roof fans with horizontal air exhaust are designed for ventilation systems in housing, commercial and industrial projects which require removal of hot air up to +120°C IN TEMPERATURE.

**Material:**

- housing: electrostatic-coated iron sheet
- rotor: galvanized steel sheet

**Insulation class:** F

**Protection rating:** IP 44

**Product code example**

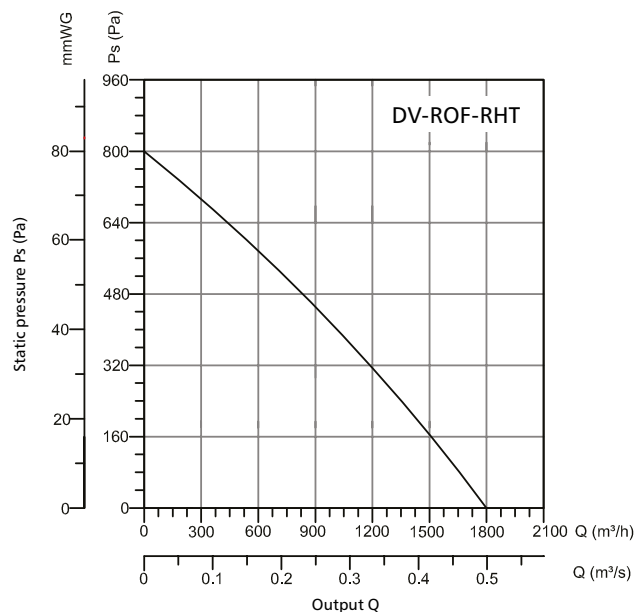
Product code: **DV-ROF-RHT - 315**

type \_\_\_\_\_  
 ØA \_\_\_\_\_

| Type           | A<br>[mm] | B<br>[mm] | C<br>[mm] | D<br>[mm] | E<br>[mm] | H<br>[mm] |
|----------------|-----------|-----------|-----------|-----------|-----------|-----------|
| DV-ROF-RHT-315 | 411       | 310       | 180       | 30        | 164       | 340       |

### Charts

DV-ROF-RHT fan flow characteristics



\*Given the current EU Ecodesign of Energy Related Products Directive, the technical parameters of the fans may vary. See the specifications on the nameplate.

## High-temperature roof exhaust fans

# DV-ROF-RHT

### Technical specifications

| Type           | Voltage (V) | Frequency (Hz) | Power (W) | Current (A) | Capacitor (µf) | Speed (rpm) | Air flow rate (m³/h) | Noise level (dB(A)) | Max. air flow temp [°C] | Weight (kg) |
|----------------|-------------|----------------|-----------|-------------|----------------|-------------|----------------------|---------------------|-------------------------|-------------|
| DV-ROF-RHT-315 | 230         | 50             | 185       | 0.82        | 5              | 2730        | 1800                 | 79                  | 120                     | 11,30       |

### Energy class

| Model          | Noise level (dB) | Output (m³/h) | Energy class |
|----------------|------------------|---------------|--------------|
| DV-ROF-RHT-315 | 79               | 1800          | B            |

